



THE CITY OF
LEICESTER
COLLEGE

Every student in year 10 has been following a programme in tutor time to show them **how to revise effectively.**

They have been shown how to:

Make revision cards

Use GCSEPod

Make a revision timetable

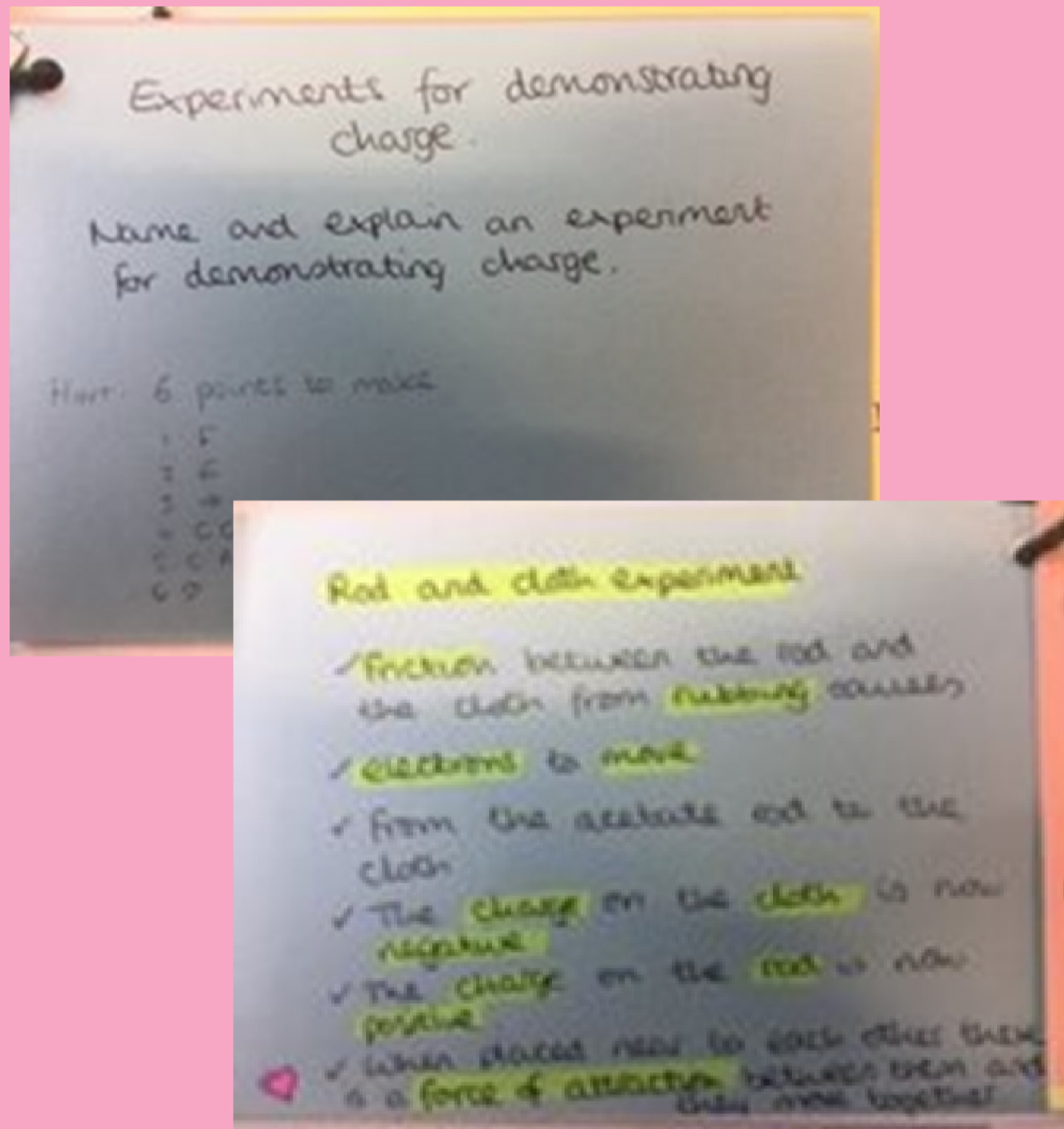
Space their revision to avoid forgetting

Make good notes

Work in 25 minute blocks to stay focused

TOP TIPS FOR REVISION

Revision cards



Should have questions on one side and answers on the other side. This encourages self-testing. They should not just have paragraphs of text copied from the textbook!

Making a revision timetable

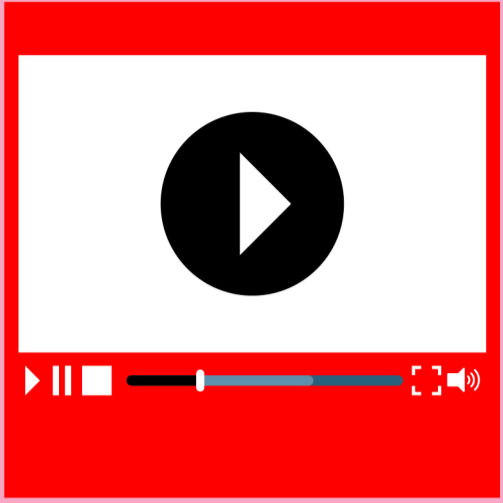
	Monday	Tuesday	Wednesday	Thursday	Friday	Saturday	Sunday
8-9am							
9-10am	Maths – circle theorems.	English - poetry Ozymandias & London – annotate poems	Maths – circle theorems. Exam questions.	Geography – case studies. Test on flashcards	English - poetry Ozymandias & London – timed essay		Maths – circle theorems and Pythagoras
10-11am	Practice questions on Hegarty						
11am-12pm			English - Macbeth grid of 9				Physics – radioactivity. Practice questions on Kerboodle
12-1pm		Maths – Pythagoras Practice questions on Hegarty		Maths – Pythagoras practice questions.	English - Macbeth grid of 9		
1-2pm	Physics – radioactivity. Notes and revision cards						
2-3pm							
3-4pm		Geography – case studies. Make flashcards					
4-5pm			Physics – radioactivity. Self-testing using revision cards				
5-6pm							
6-7pm							

Should identify a subject, topic and method for revision.

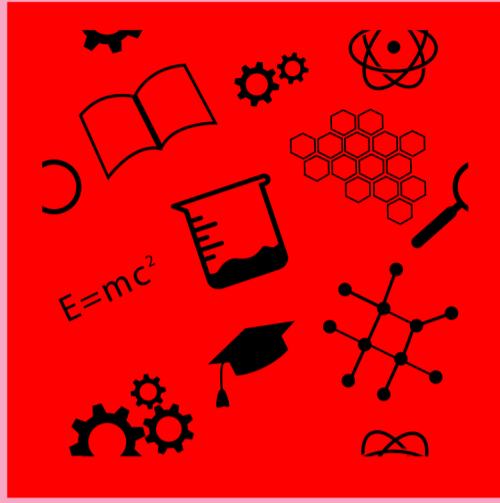
eg. Maths, pythagoras, make revision cards.

Each topic should be revisited after a couple of days. See the example above.

GCSE Pod



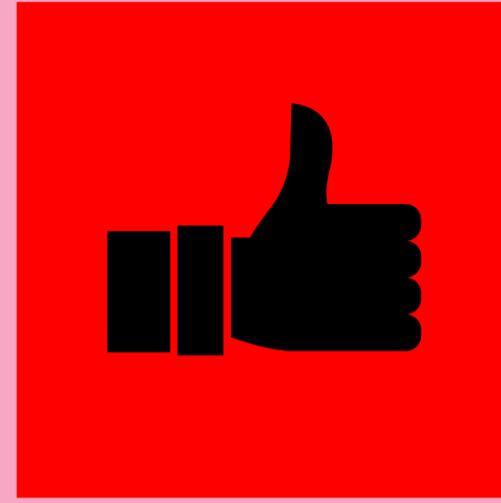
3-5 minute videos
(or "Pods")



Lots of different
subjects in one
place



Exam-style
questions

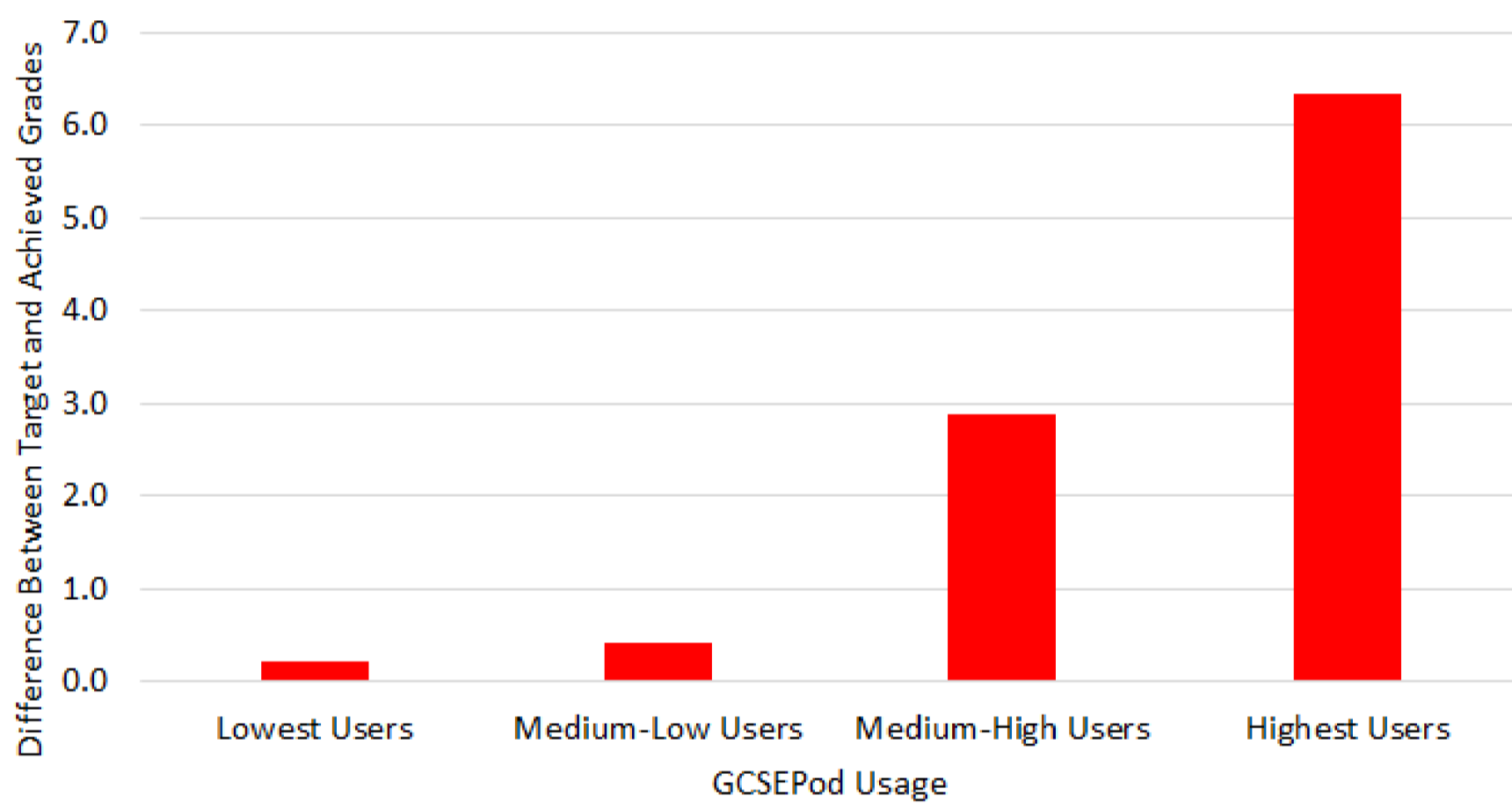


Know if you got it
right



Your teacher can
see your effort
and scores

Average Target Grade versus Average Achieved grade
by Category of GCSEPod User



Proven to improve
GCSE grades when
used regularly.

A screenshot of the GCSEPod login page. The page has a purple header with the GCSEPod logo. On the left, there are links for 'New to GCSEPod?' (Get started), 'Need help?' (Forgotten my login details, Info for Parents / Carers), and social media icons. The main area is a 'Login' form with fields for 'Username or Email' and 'Password', and a 'Login' button. Below the form, there are options to 'Sign In with Google' and 'Sign In with Office 365'. A red circle highlights the 'Sign In with Office 365' button. At the bottom, a note states: 'Your GCSEPod account and external account must have matching email addresses.'

Log in by clicking
Office365 orange
button both times,
then using your
school email and
school password.